



Layton Primary School

‘Growing great minds together’



Welcome

Dear Parents and Carers,

A warm welcome to Layton Primary School's prospectus. Here you will find plenty of information about our school, our aims, our welcoming ethos and our staff.

We wish to enable your child to be the best they can be, whatever their talents, and to develop their skills in order that they achieve beyond their expectations.

At Layton we place a high value on children's achievement and attainment, and have been extremely successful in this regard. We remain one of the most successful schools in England at developing children's potential; in 2013/2014 we were placed in the highest 250 schools in the country for attainment and achievement of groups of our pupils, and were one of the most improved schools in the country. In 2015 we were placed in the highest 100 top performing schools in the country; we are incredibly proud of this huge achievement. In October of 2017 we received an outstanding judgement in all areas from OFSTED. We will be looking forward to building on this success and will continue to strive for excellence in all that we do.

We are currently an Apple Distinguished School and place a high value on using ICT to support development of children as independent learners from the moment they start in Foundation.

We deliver a bespoke curriculum which is tailored to the needs of the children in our community, complying with all national requirements, but tailored to cater for individual needs. We place a high value on the basic skills of Literacy and Numeracy, as well as the skills of learning itself, in order that our children can continue to learn throughout life, and utilise what they have learned over and over again. Our curriculum builds on those skills year upon year, both in academic skills, and in creative subjects.

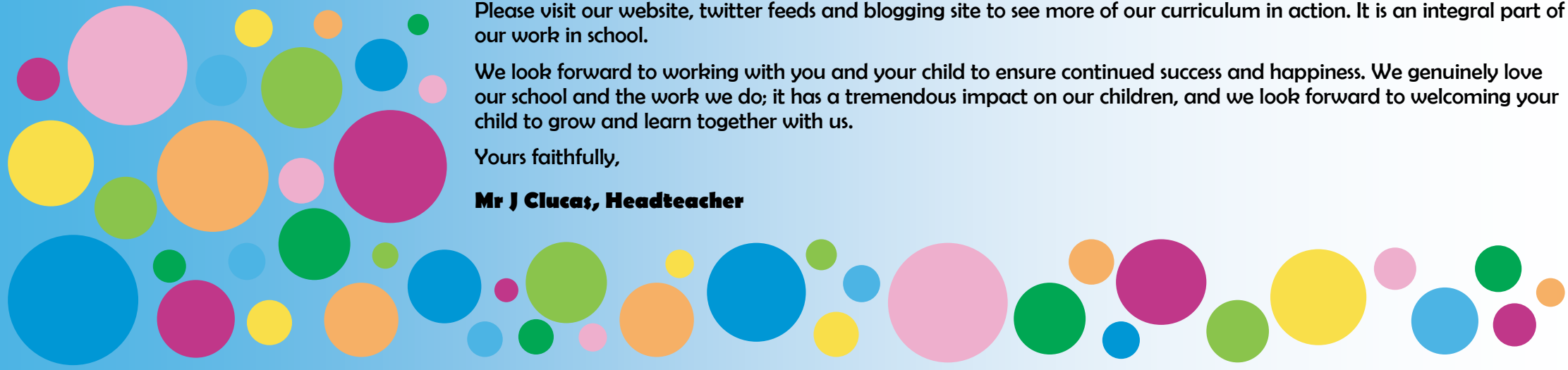
We aim to educate our children in partnership with yourselves. Our relationship is vital to securing the best outcomes for your children, and we value it highly. Our aim is, as a community, to "Grow Great Minds Together."

Please visit our website, twitter feeds and blogging site to see more of our curriculum in action. It is an integral part of our work in school.

We look forward to working with you and your child to ensure continued success and happiness. We genuinely love our school and the work we do; it has a tremendous impact on our children, and we look forward to welcoming your child to grow and learn together with us.

Yours faithfully,

Mr J Clucas, Headteacher



Layton 5 Rs

Relationships

To encourage and praise positive **relationships** with peers. Self-respect and mutual respect for others: own and others beliefs, premises, contents and our environment.

Reflective

To build **reflective** learners; pupils and adults that are able to revise and review their behaviour and work. To develop politeness and good manners and promote kindness and helpful behaviours.

Resilience

To develop every child's self-discipline, full potential and independent learning through promoting **resilience** and an 'I can do' attitude.

Resourceful

To develop **resourcefulness** in all our children. Develop the ability for children to cope in any situation they are faced with in school and in the wider community.

Risk taking

To provide all stakeholders the opportunities to become **risk-takers**, aiming to build a whole-school belief system where all can 'have a go' and mistakes are seen as a learning resource.

Our Aims

- To provide a safe, secure yet stimulating environment for the purpose of promoting all children's learning.
- To provide an atmosphere in which every child will experience mutual respect, consideration and care.
- To provide a wide range of experiences for children through which they will acquire knowledge and develop skills which can be applied both now and in later life; to foster positive attitudes towards work and leisure.
- To provide an education – academic, social, physical and spiritual – suited to the needs of each individual child, in the context of his/her ethnic and linguistic background

"Layton is a place where I feel safe because I know all the grown ups care about me and listen to me. Layton is the best school in the neighbourhood and I would never want to go anywhere else."

Holly—Year 5 pupil

Ofsted

Following our last inspection in October 2017, Ofsted said Layton Primary was an **OUTSTANDING** school.

“The innovative approach to the professional development of staff has enabled them to grow quickly into highly-skilled practitioners who share a passion for learning.”

“The provision for early years is outstanding. High-quality leadership and teaching create a stimulating learning environment and ensure that children have the best possible start to school life.”

“The exceptional leadership of the Headteacher and the staff team has created a climate of high expectations, a love of learning and an insistence of the very best for every pupil.”

If you wish to read the document in full, it is available at www.ofsted.gov.uk

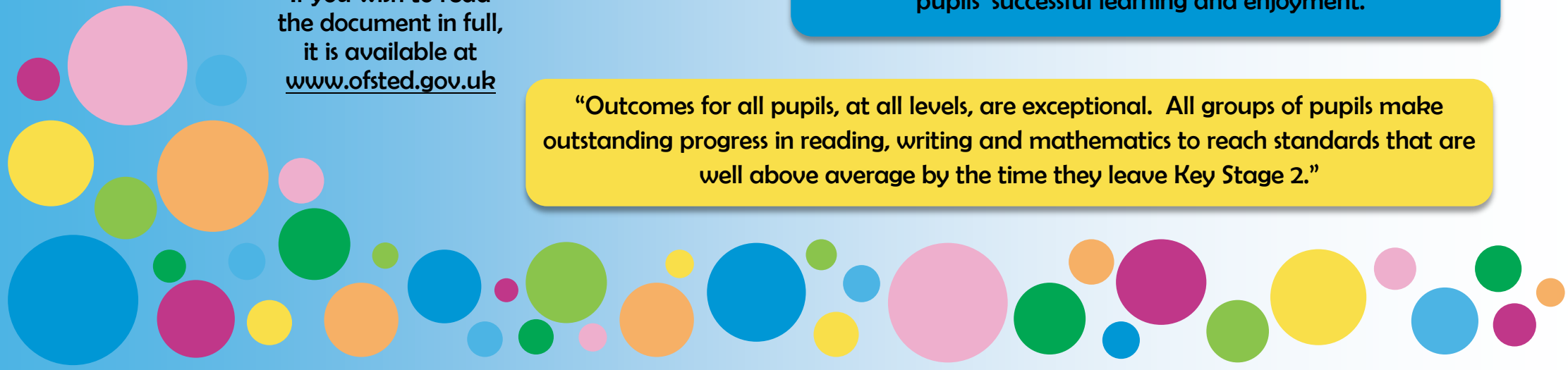
“Layton lives up to its motto ‘Growing great minds together’ in everything it does.”

“At the core of its success is the resolute view that the highest quality of teaching and learning ‘must run through the school like a piece of Blackpool rock’.”

“Leaders are diligent in carrying out their duties for safeguarding. As a result, pupils say that they feel safe in school. Their welfare needs are well met.”

“The state-of-the-art and wide-ranging use of information and communication technology has a significant impact on pupils’ successful learning and enjoyment.”

“Outcomes for all pupils, at all levels, are exceptional. All groups of pupils make outstanding progress in reading, writing and mathematics to reach standards that are well above average by the time they leave Key Stage 2.”



The Curriculum

Our aim for our teaching and learning curriculum at Layton Primary School is that children are given opportunity to excel in all areas. We offer a broad and balanced curriculum whereby we encourage children to think deeply and richly within the subjects which they study. We teach the National Curriculum in all subjects incorporated into a bespoke critical thinking curriculum whereby children are exposed to 'big questions' where they are encouraged to analyse, reason, evaluate, make decisions and problem solve using the knowledge that they have learned. We value rich and deep thinking and will engage children in tasks to develop their thoughts and apply their knowledge. There is an ambitious curriculum for each and every one of our pupils which aims to develop their abilities in each area. A high standard of achievement is encouraged in all subjects - we are ambitious for all of our children and believe in their abilities.

It is appreciated that some children experience difficulties and wherever necessary, additional support is provided and given. Some children will be identified as having Special Educational Needs (SEN) and in partnership with parents and carers, will be brought to the attention of our SENDCO (Special Educational Needs and/or Disabilities Co-ordinator). Religious Education is based on the Lancashire syllabus. Each half term the children are presented with a reflective question to provoke thought and discussion about different religions.

During assemblies, children learn about British Values as part of our moral, social, spiritual and cultural curriculum. The chosen Modern Foreign Language (MFL) is French which is taught throughout KS2. The PSHE and RSE curriculum are taught as stand alone lessons and through other subjects to explore cross-curricular opportunities. A specialist music teacher provides lessons throughout school whilst Blackpool Music Service provide opportunities for the children to access a range of instrumental tuition in drums, violin, keyboard and recorder.



Admissions

In Blackpool children are admitted to school from the beginning of the school year in which they become 5 years old. Admissions to school are in accordance with stated parental preferences and using the criteria laid down in the admissions section of Blackpool Council and according to school policy.

Admissions are made via Blackpool Council. www.blackpool.gov.uk

Admissions arrangements for Foundation Stage pupils

Home visits are carried out as part of the induction process.

Step one Foundation Stage children do not attend school. Home visits will be carried out as part of the induction into school during this first week

Step two All children either attend in the morning OR in the afternoon

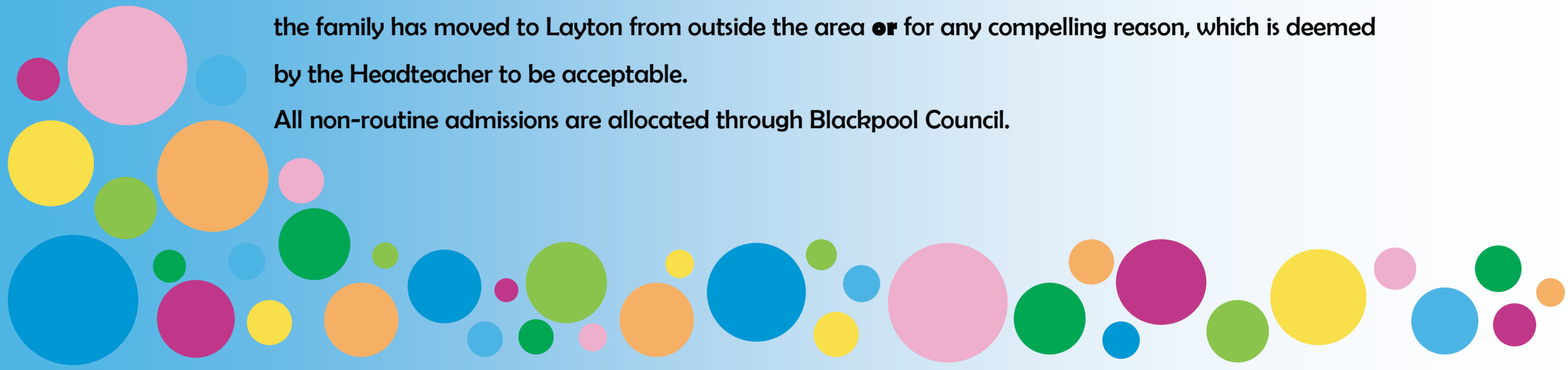
Step three The aim is to get children enrolled into school life full time

In consultation with parents, some children will remain part-time until they have settled into school life.

Mid-term Admissions

Non-routine admissions are restricted to the beginning of the school term, except for instances where the family has moved to Layton from outside the area or for any compelling reason, which is deemed by the Headteacher to be acceptable.

All non-routine admissions are allocated through Blackpool Council.



Induction for Parents and Children

Foundation Stage

Parents/carers who have received an offer of a place for their child will be provided with lots of information about starting school with possibilities of events to attend, online videos and resources, and of course the ability to call school and ask questions. Parents will be asked to complete a Starting School Information form, so that we can get all the information about the child, prior to starting.

Children will be invited into school so that they can see their classroom, meet their teachers and fellow pupils. Parents can stay in school during this time at our 'Stay and Play' sessions, usually held in the July prior to the September start. Settling into school life has been explained on the page prior regarding Foundation's admission.

Non-Routine Admissions

Children who join school mid-term will normally have a brief induction to the school, whereby:

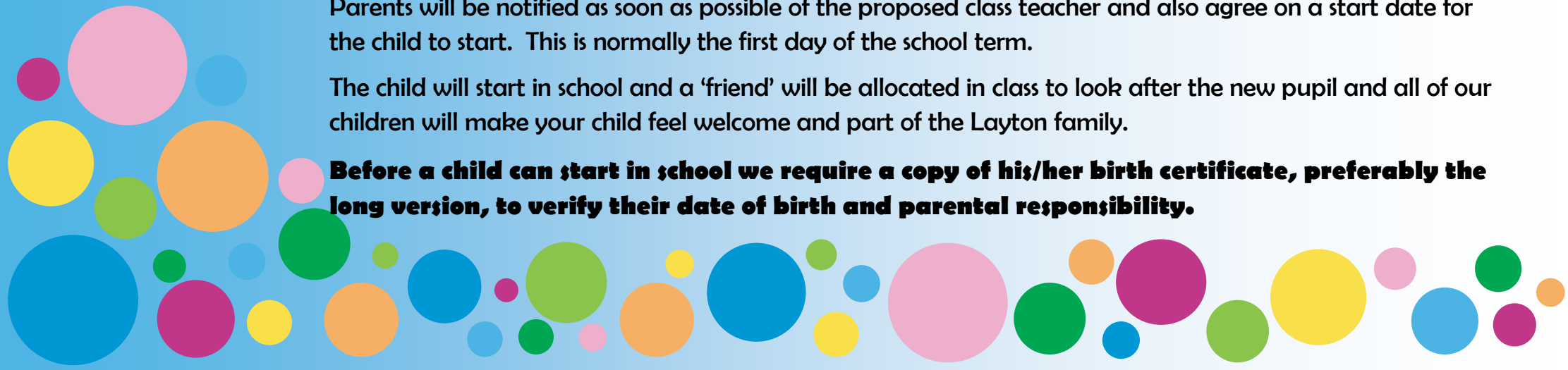
Parents will be given information about the school and asked to complete a school admission form (on our school website in School Information/Admissions & Inductions).

On return of the completed form, parents and children will be invited for a show-round of the school, so they get a taste of school life.

Parents will be notified as soon as possible of the proposed class teacher and also agree on a start date for the child to start. This is normally the first day of the school term.

The child will start in school and a 'friend' will be allocated in class to look after the new pupil and all of our children will make your child feel welcome and part of the Layton family.

Before a child can start in school we require a copy of his/her birth certificate, preferably the long version, to verify their date of birth and parental responsibility.



The School Day

Children may come into school from 8.40 a.m. and are able to have a breakfast item if they wish (Through the Blackpool Council breakfast scheme). Registers are taken at 8.55 a.m. prompt. The school day finishes at various times from 3:10p.m to 3.20p.m depending on the child's year group.

Extended Schools

Breakfast Club – 8.00 a.m. until the start of school, £3.50 per session. After School Club – 3.15 p.m. until 5.30 p.m., £6.50 per session. Both clubs are very popular and can sometimes have waiting lists so it is imperative to book. There is always a wide range of activities on offer and children are provided with a drink and snack. *Please enquire at the school office if you are interested in booking a place for your child.*

Extra - Curricular Activities

We offer a wide range of extra-curricular activities that children can join. These normally run after school for about an hour or during dinner times. Below are examples of the clubs currently on offer:

School Choir Taekwondo Street Dance Debate Club Multi-Skills Digital Leaders

Organisation of Classes

Layton Primary is a mixed non-denominational Primary School catering for children within the age range of 4 years to 11 years. There are three classes in each year group in school and we aim for a maximum class size of 30.

School Meals

Our school meals are provided by Lancashire Catering who have several healthy and tasty options for pupils to pre-select with their parent/carer the week prior. Pupils in Foundation—Year 2 inclusive can have a school meal free of charge through the Universal Free School Meals scheme. Further information can be found on our website in the parents section.



School Uniform



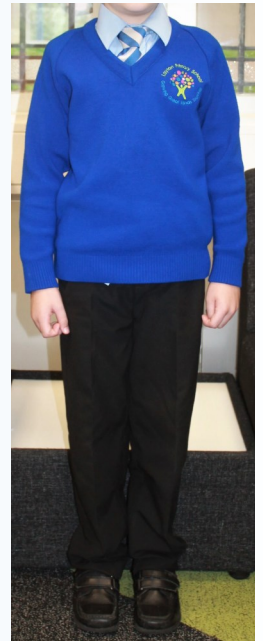
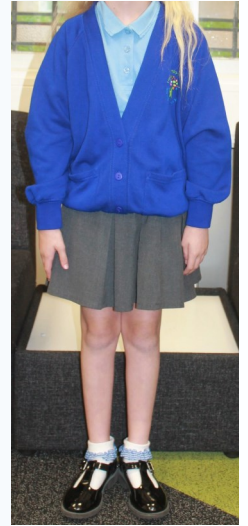
We encourage all our pupils to have a good standard of appearance and we pay attention to nails, shoes and cleanliness in general. All pupils must wear smart, black, sensible school shoes. Trainers, boots (other than ankle boots), or shoes with a heel are not suitable for the school day, break times or PE. We appreciate that robust shoes can be expensive, however these are necessary when walking to and from school, and particularly on rainy days. We would also like to highlight that should you wish for your child to wear a shirt, they must accompany this with a tie. Clearly labelling all items will also help us to return any lost uniform to your child.

Wearing a uniform allows all pupils to come to school as equals, and takes pride in their appearance and the school; there are many different values associated with this which will prepare them for later life.

Uniform: Trousers - grey (long or short). Shirt (with tie) or polo shirt - light blue. V-neck Pullover - Royal Blue. Tie - Grey & Royal Blue. Socks - Grey. Blouse - Light Blue. Cardigan - Royal Blue. Dress -(summer) Blue and White.

PE: Plimsolls (slip on) - black. Shorts - Royal Blue. T-Shirt White (plain) or White (With logo). The Layton tracksuit is available in all sizes (from Ragamuffins in Layton) as an alternative on PE days.

Items of school uniform are available from most major supermarkets. Ragamuffins in Layton, Bispham Clothing and The Uniform and Leisure Company stock all our uniform including the embroidered logo items if you prefer (this is not compulsory).



Safeguarding



Safeguarding

The safety and well-being of our children is of paramount importance to us. Our Safeguarding Policy ensures that there are effective measures in place to safeguard all our children from the risk of potential harm.

All members of our school community:

- are aware of their responsibilities in relation to safeguarding and child protection
- know the procedures that should be followed if they have a cause for concern
- know where to go to find additional information regarding safeguarding
- are aware of the key indicators relating to child abuse
- fully support the school's commitment to safeguarding and child protection.

Our DSL is Mrs Julie Barr. Our CP Officer is Mrs Sarah Dunn. Our Governor responsible for Safeguarding is Mr Chris Westhead

Anti-bullying

Keeping safe from bullying is an integral part of our curriculum. Through our 5Rs, pupils learn how to behave towards each other.

Prevent Strategy

Prevent is a government strategy designed to stop people supporting terrorist or extremist causes.

Many of the things we do in school to help pupils become positive, happy members of society also contribute to the Prevent strategy.



Communication

You can find the latest news and information such as term dates, newsletters, school policies, all on our school website www.layton.blackpool.sch.uk

Our main way of communicating with Parents/Carers is through our Parent App—this handy app has all information at your finger tips and also allows you to report your child's absence. You can add upcoming dates to your diary and receive notifications for important messages.

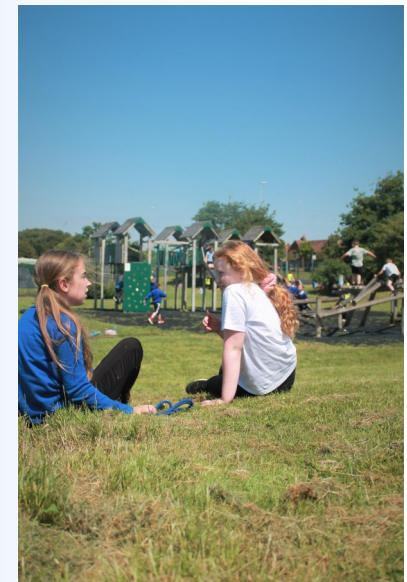
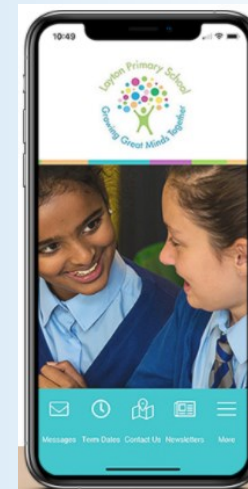
You can also view the latest news, photos and achievements of our children on the Year Group Twitter Accounts.

We may also contact you by phone, text or email so it is important to keep us up to date with your contact information.

Teachers are unable to meet parents during the school working day but try to make themselves available at the beginning and end of each school day. However, as teachers are regularly involved in meetings, attending courses or involved in extra-curricular activities, it is always best to make an appointment either by sending a note to the class teacher or by telephoning the school office.

More formally, there are specific times in the year when we report to parents. We hold two Consultation Events with Parents usually in October and March, and also offer an opportunity for parents and carers to visit classrooms in the Autumn Term to see how your child has settled into the new academic year.

At the end of the school year a written report is issued. This is sent home in July.





Tel: 01253 392179

Email: admin@layton.blackpool.sch.uk

Website: www.layton.blackpool.sch.uk

